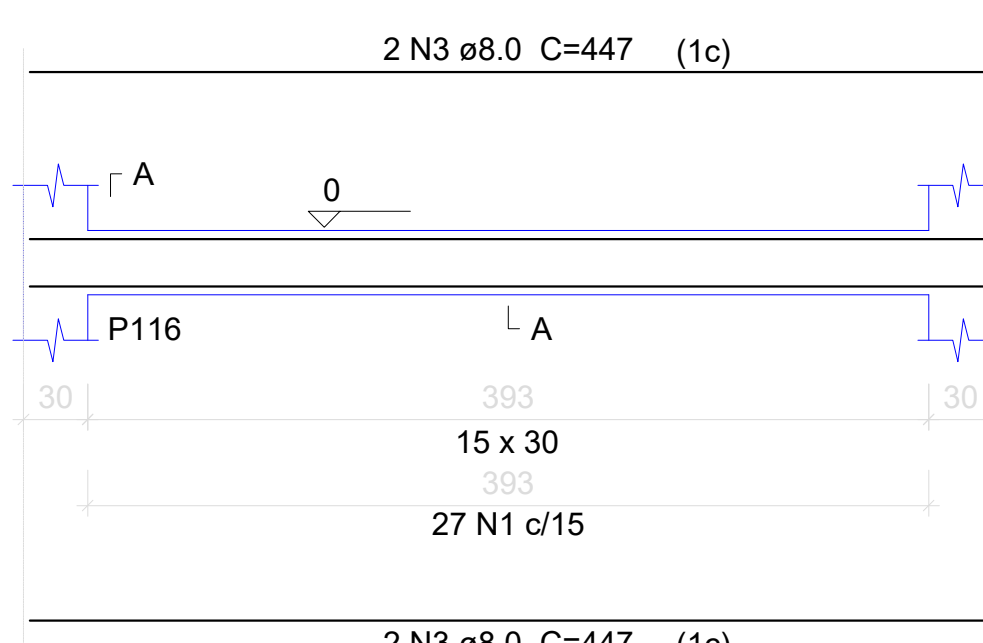


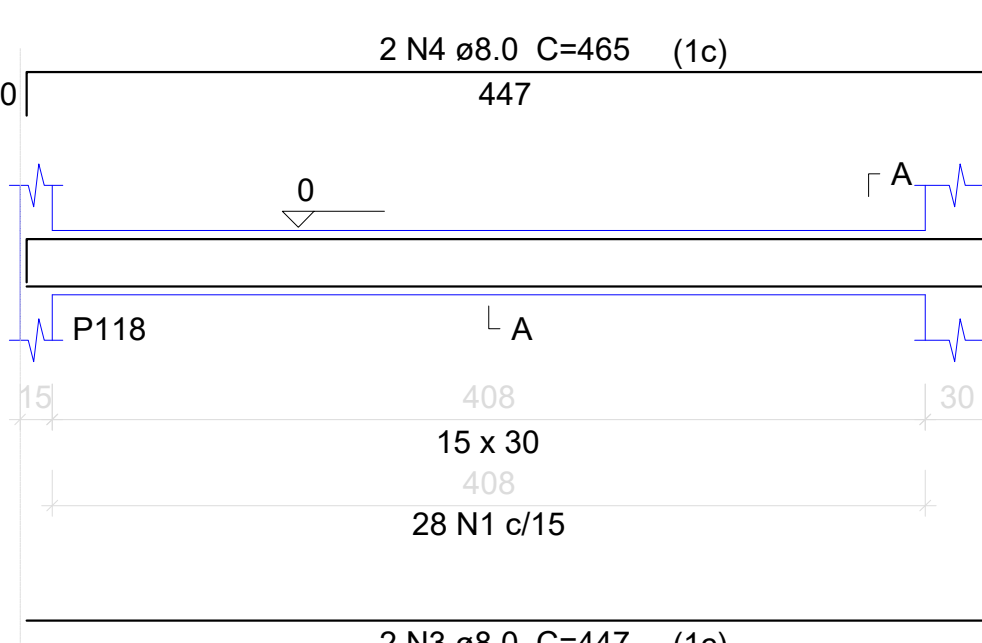
V43

ESC 1:50



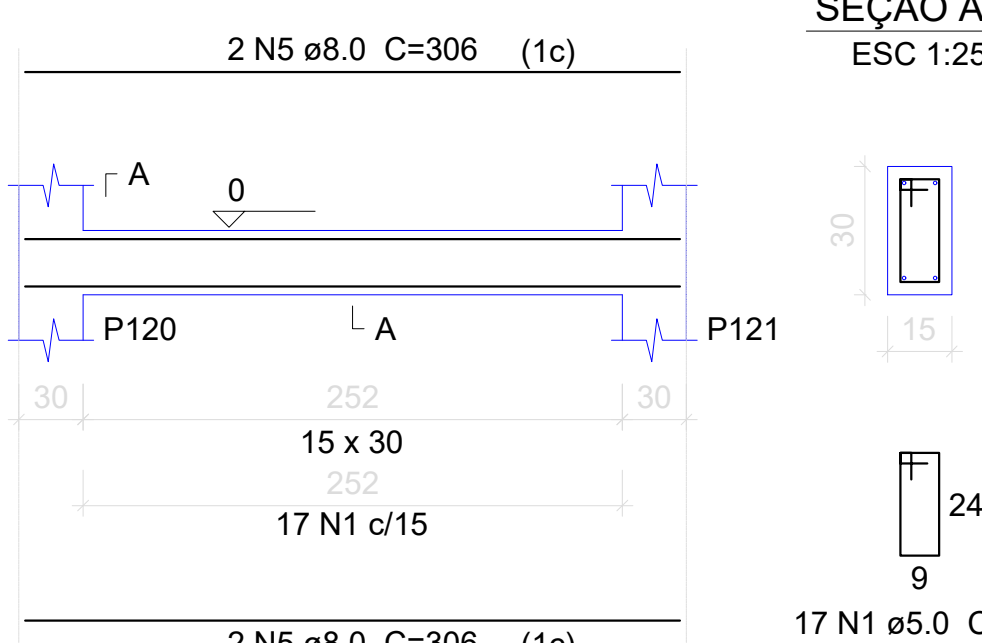
V44

ESC 1:50



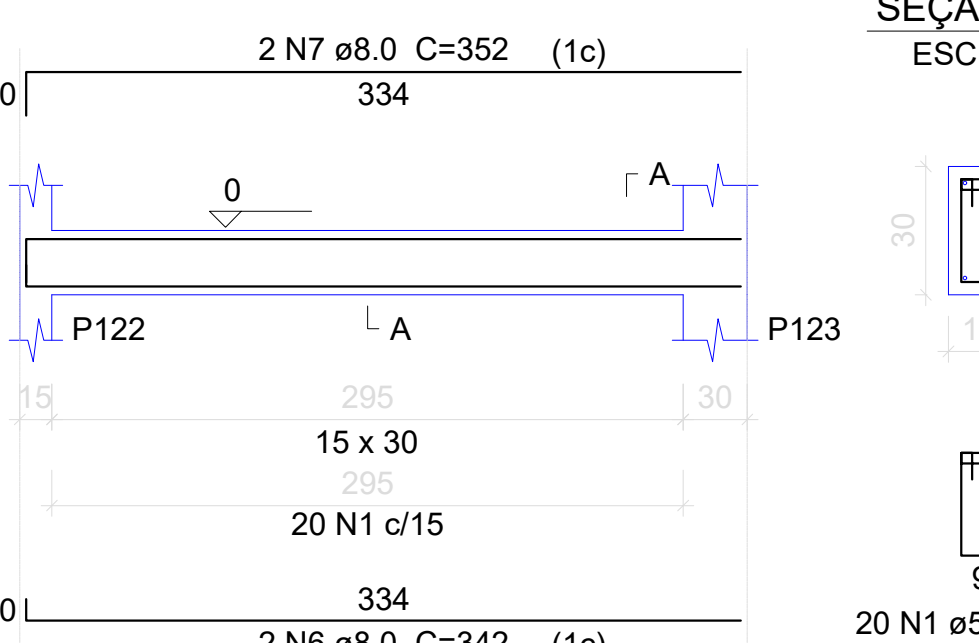
V45

ESC 1:50



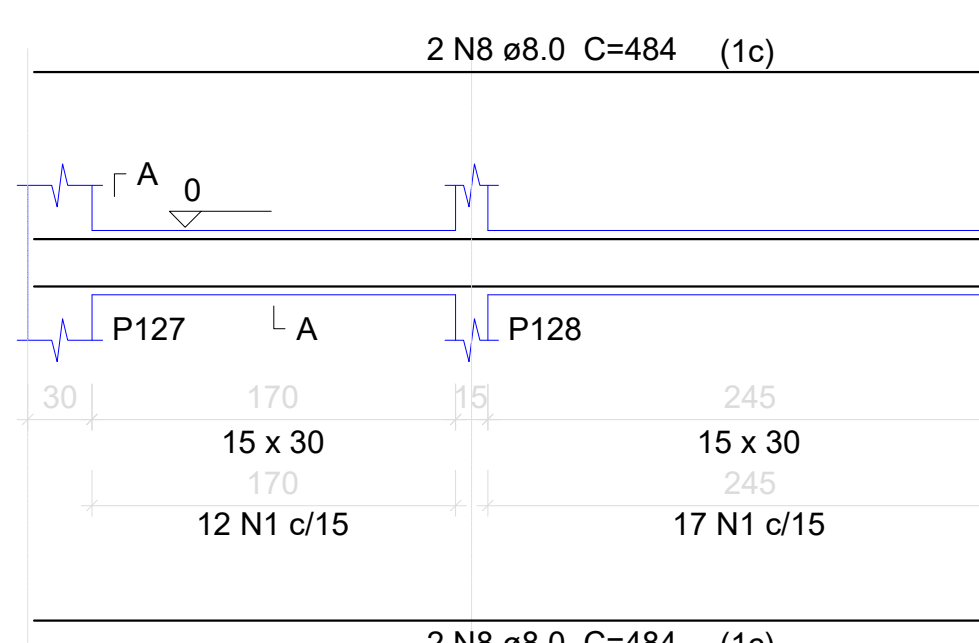
V46

ESC 1:50



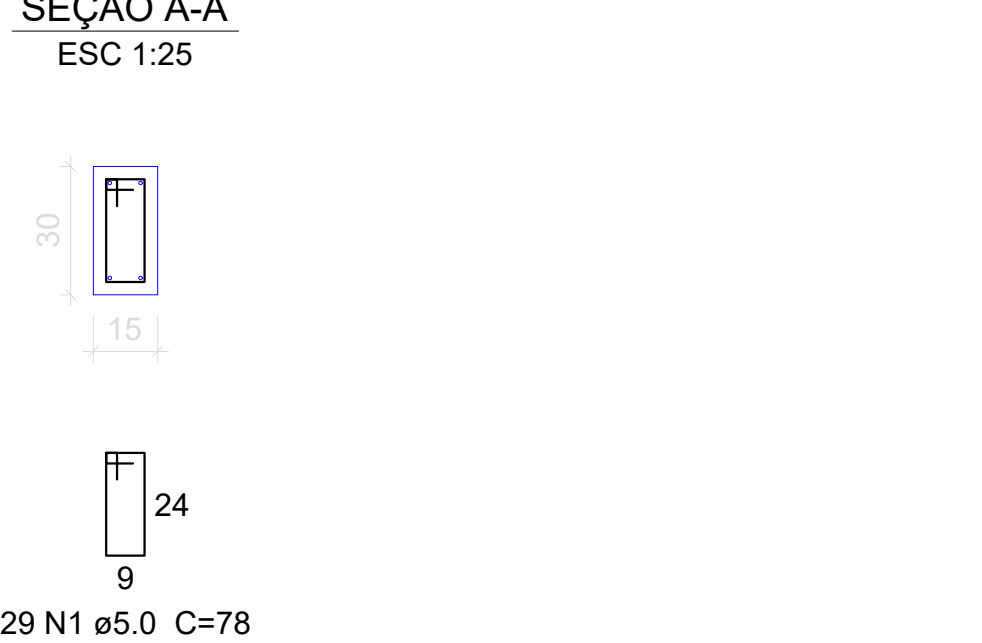
V47

ESC 1:50



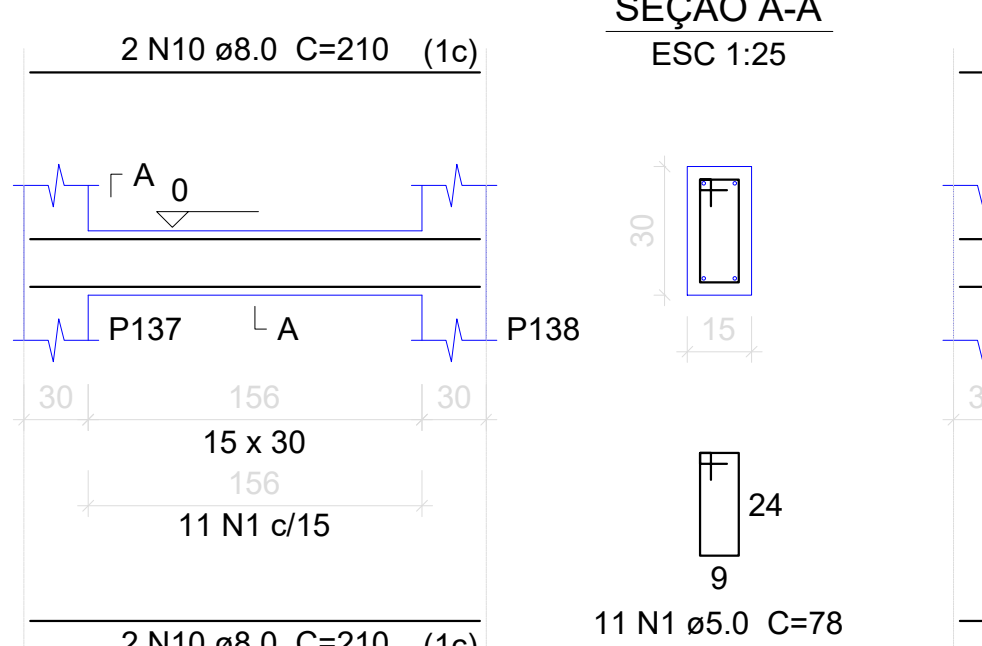
V48

ESC 1:50



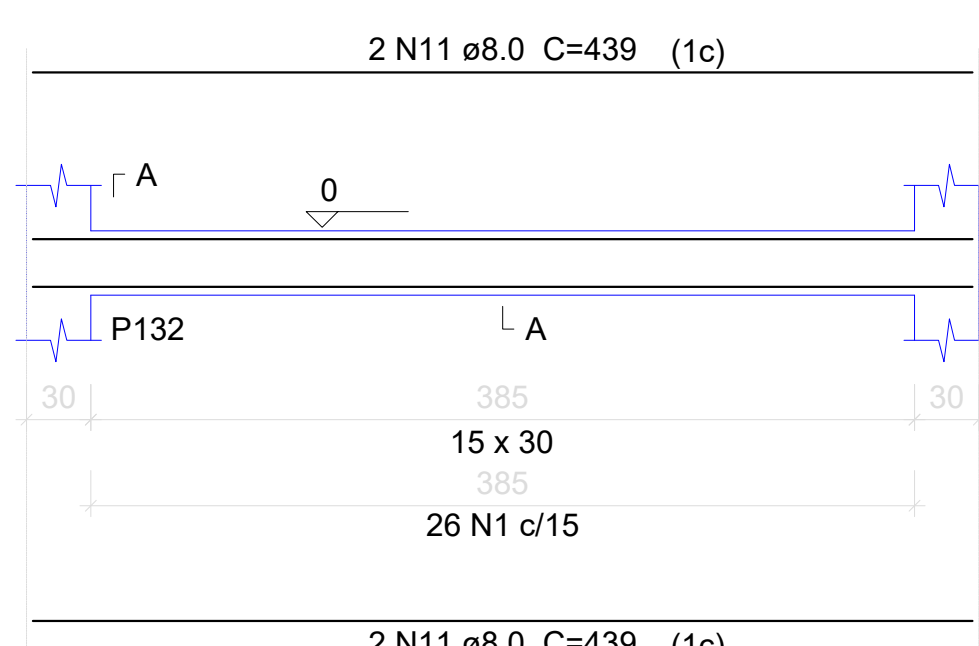
V49

ESC 1:50



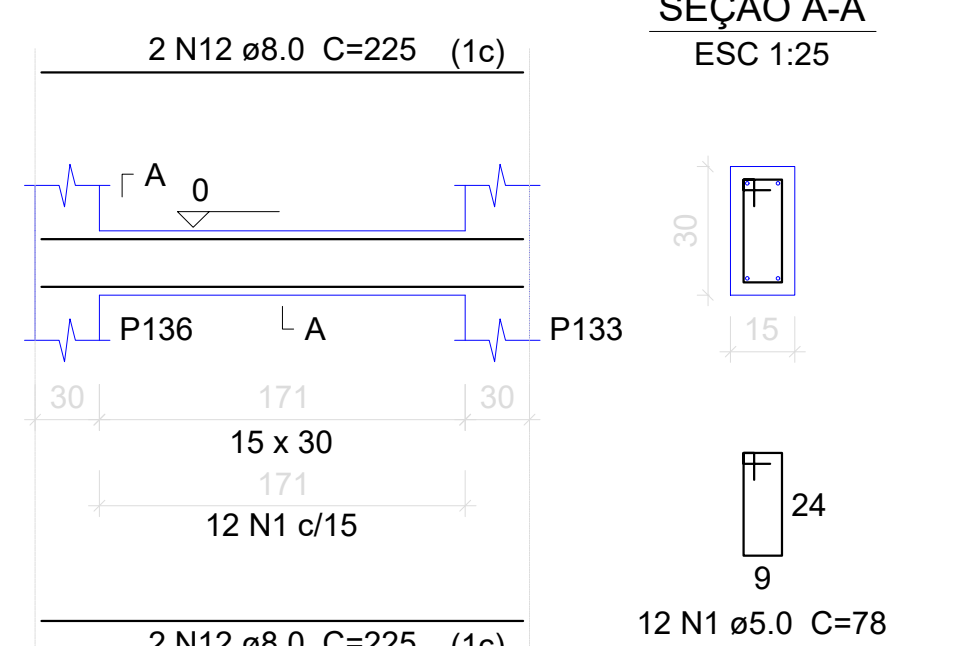
V50

ESC 1:50



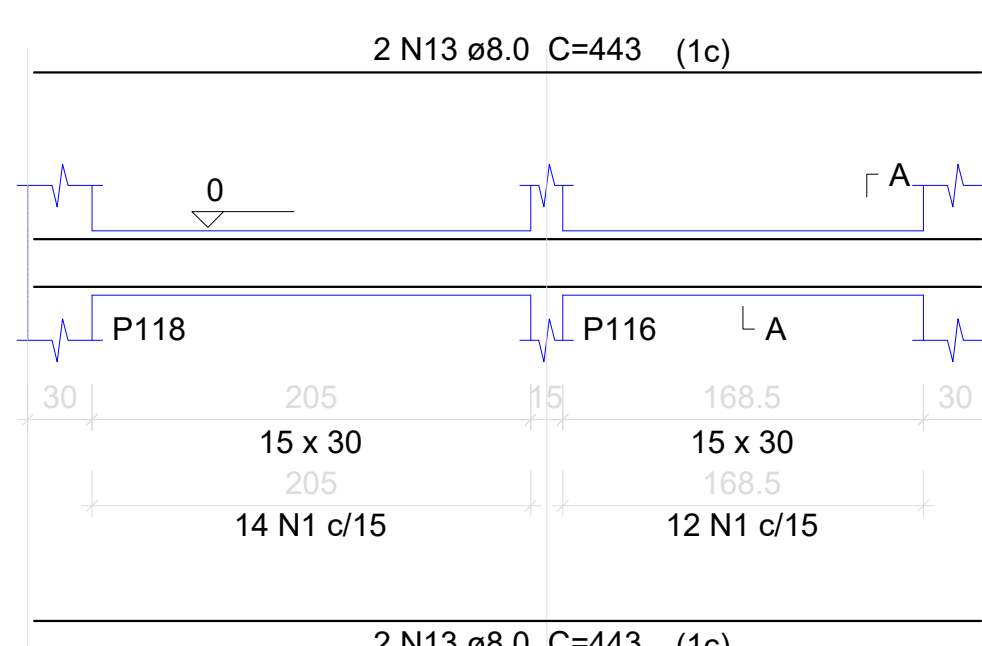
V51

ESC 1:50



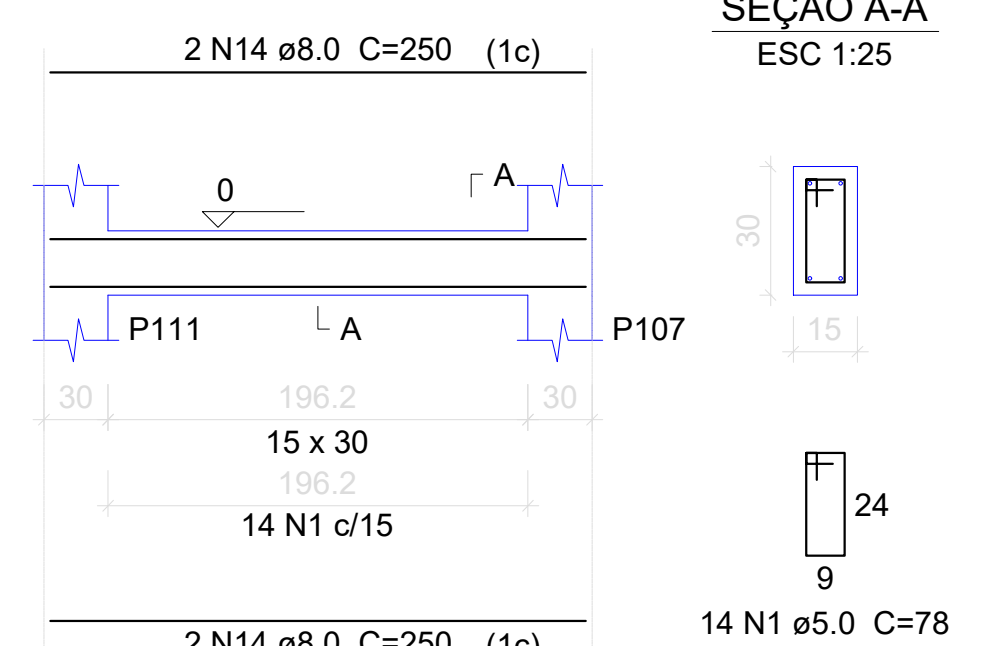
V52

ESC 1:50



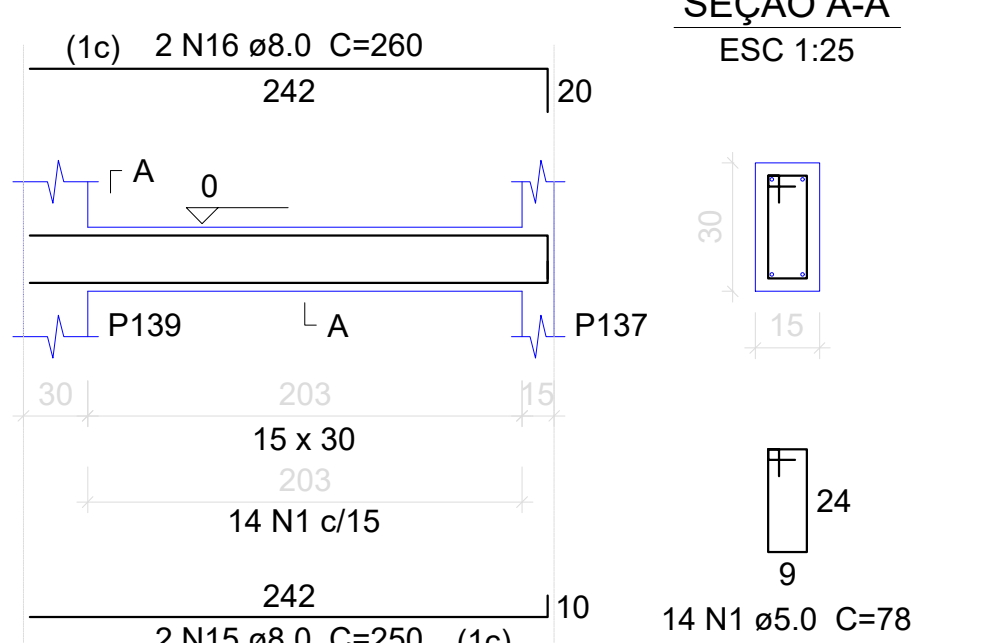
V53

ESC 1:50



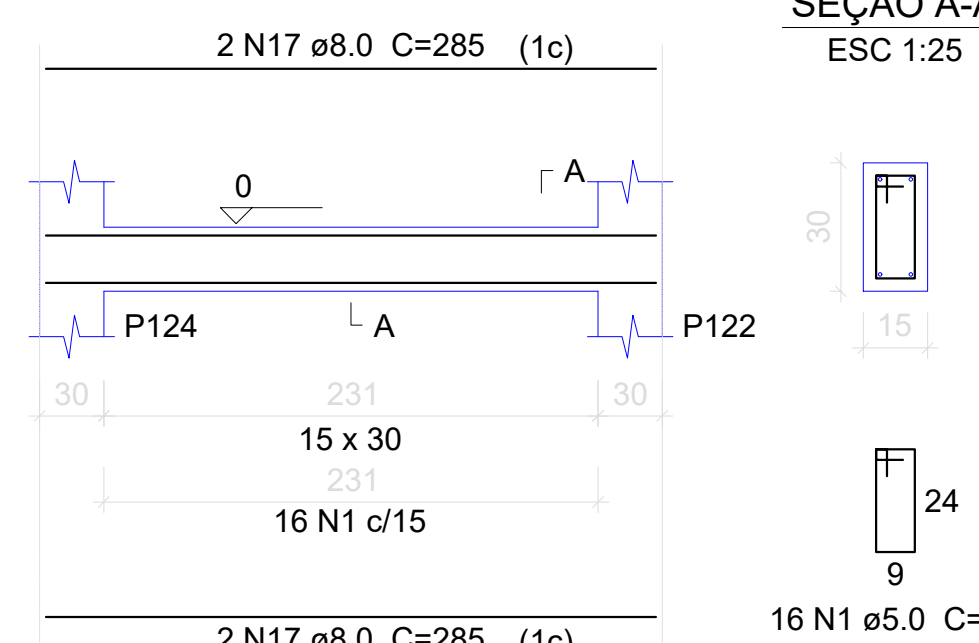
V54

ESC 1:50



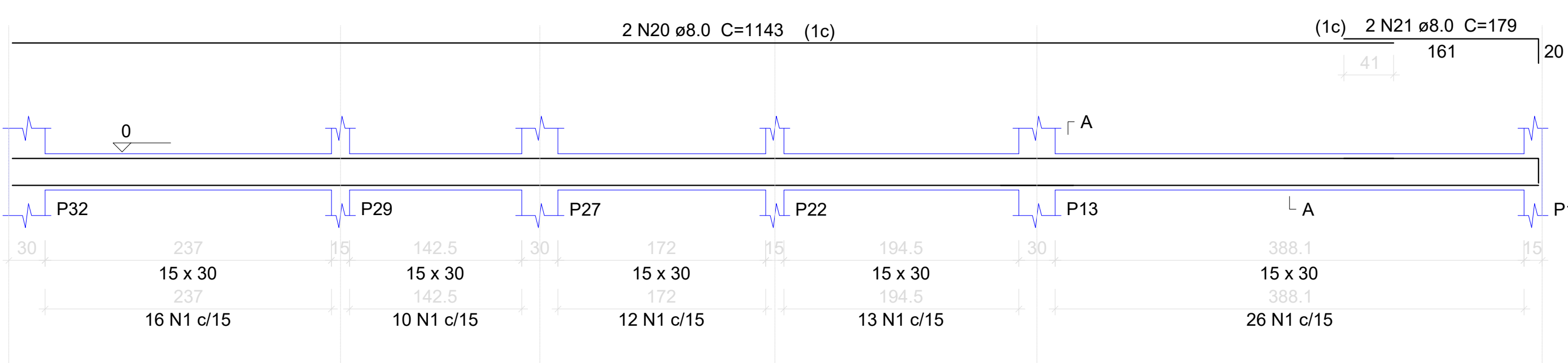
V55

ESC 1:50



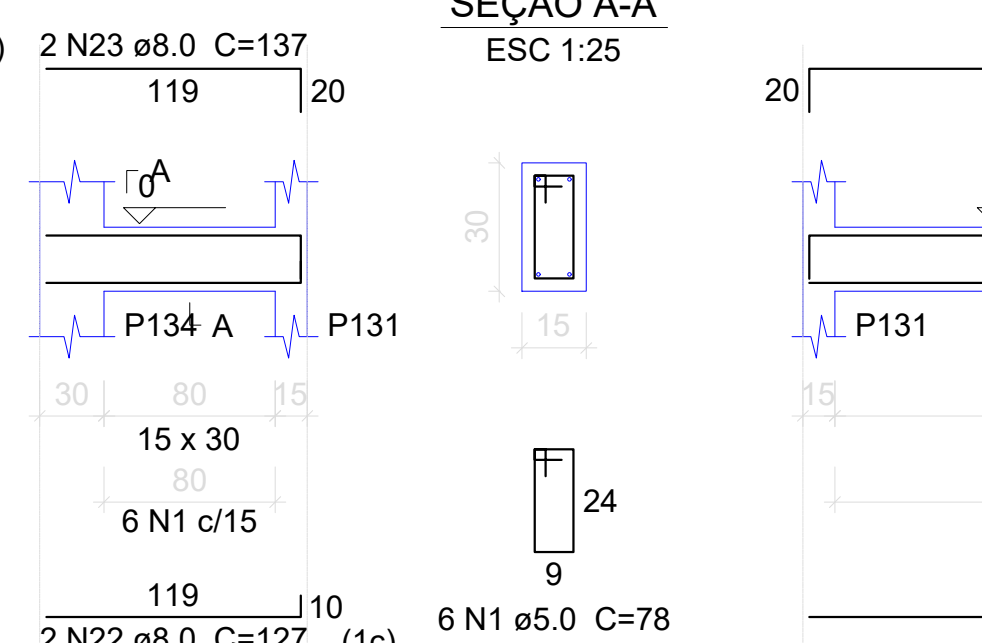
V56

ESC 1:50



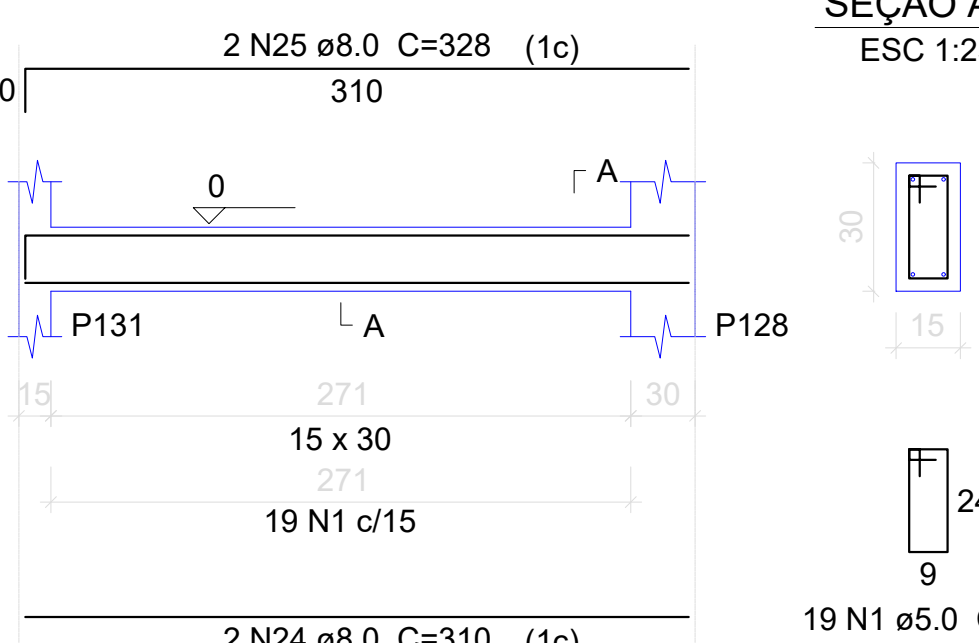
V57

ESC 1:50



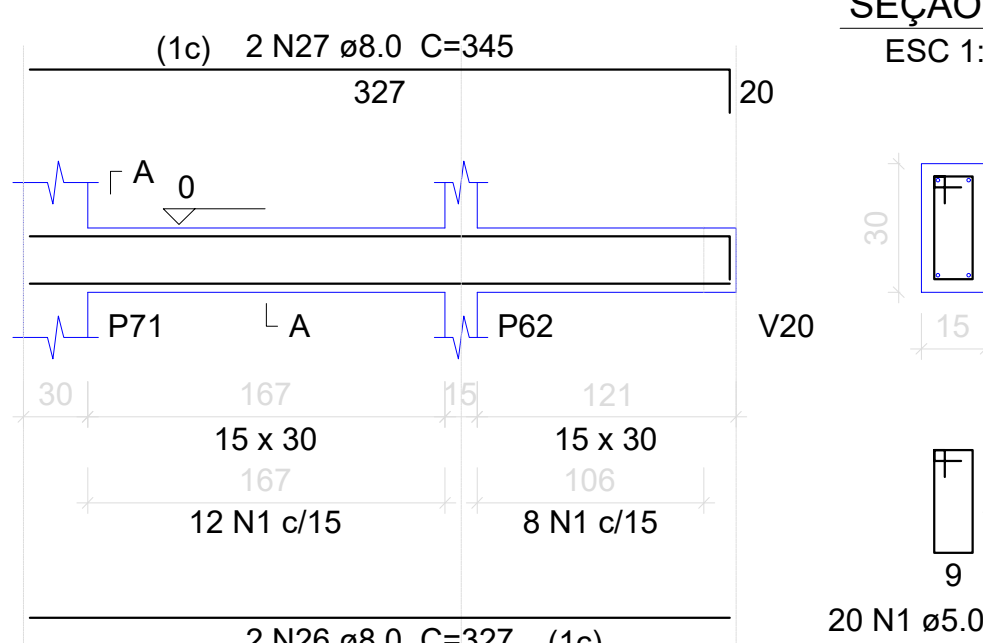
V58

ESC 1:50



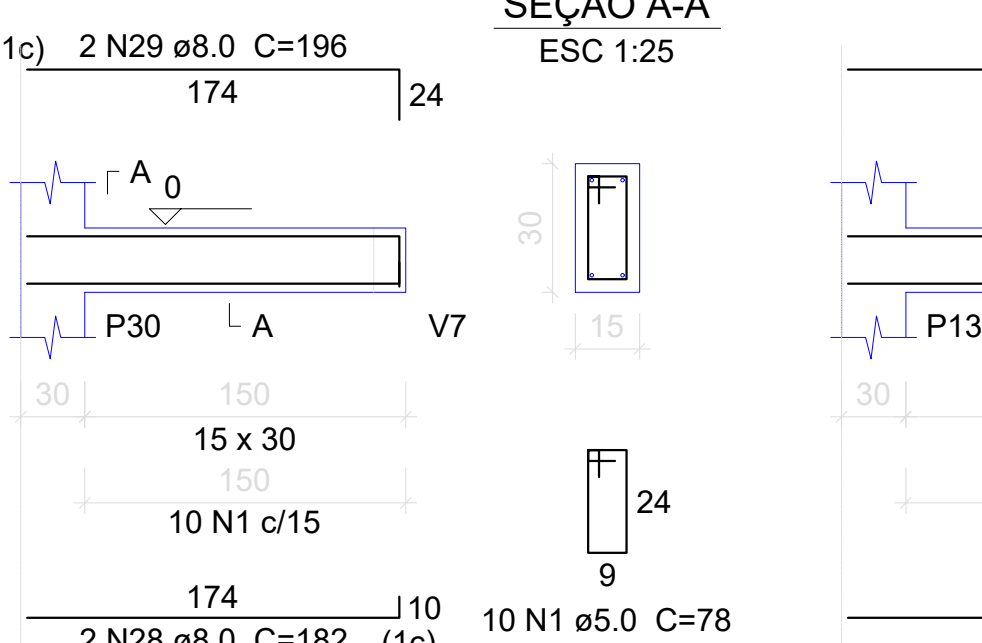
V59

ESC 1:50



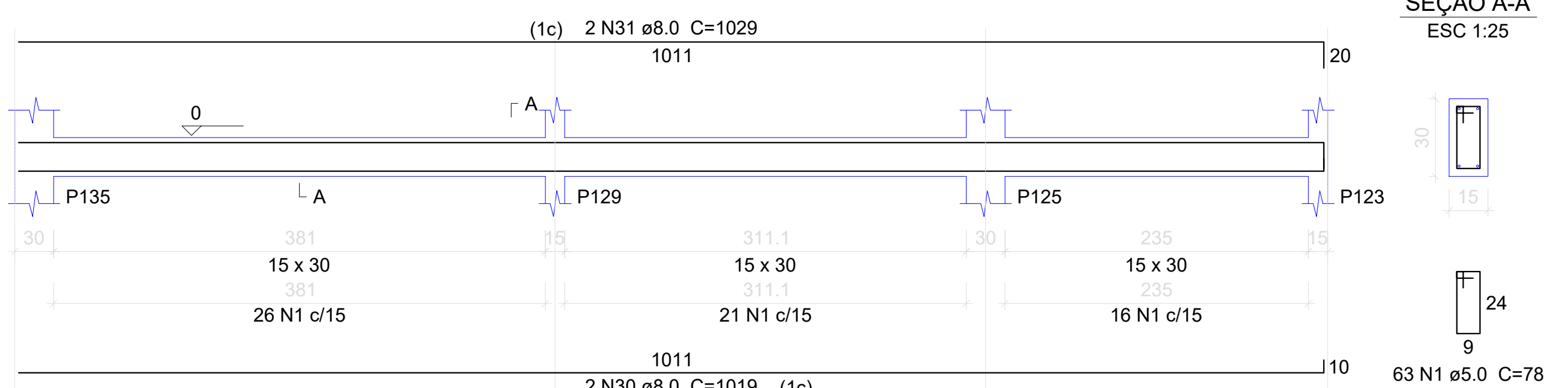
V60

ESC 1:50



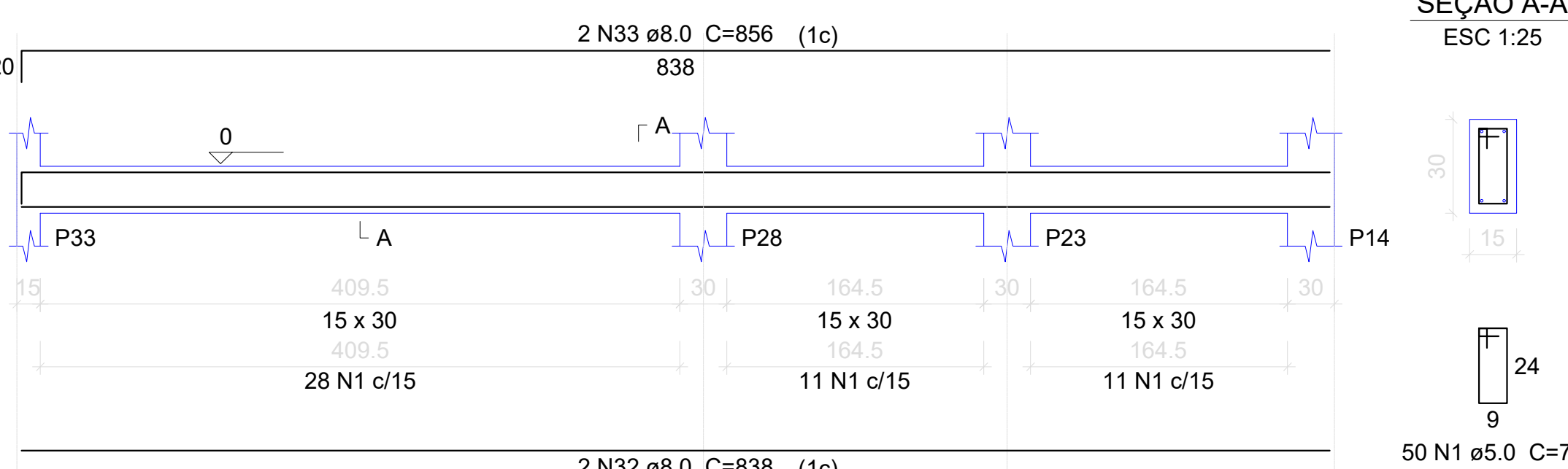
V61

ESC 1:50



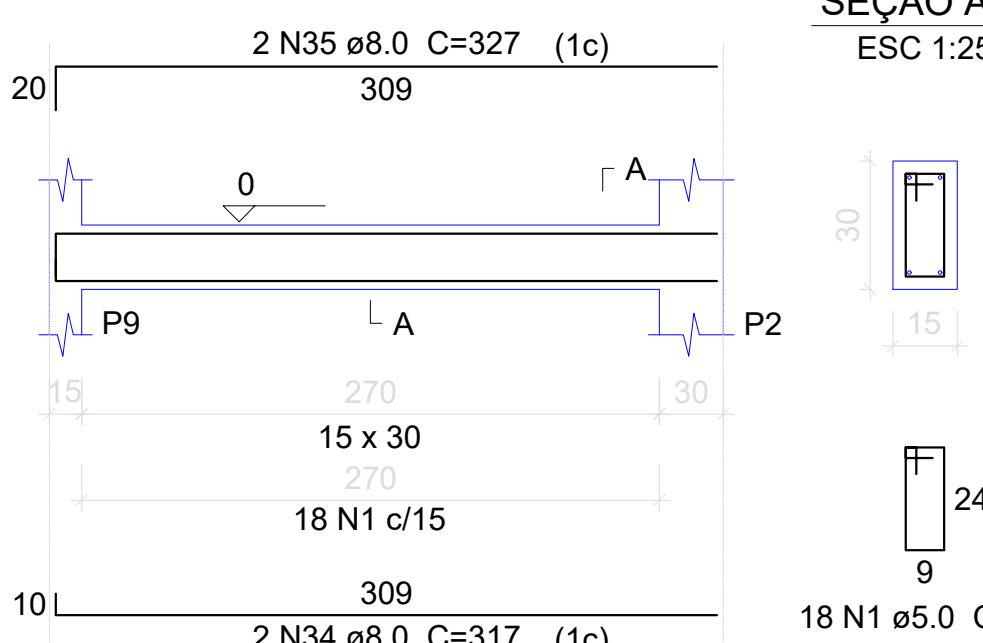
V62

ESC 1:50



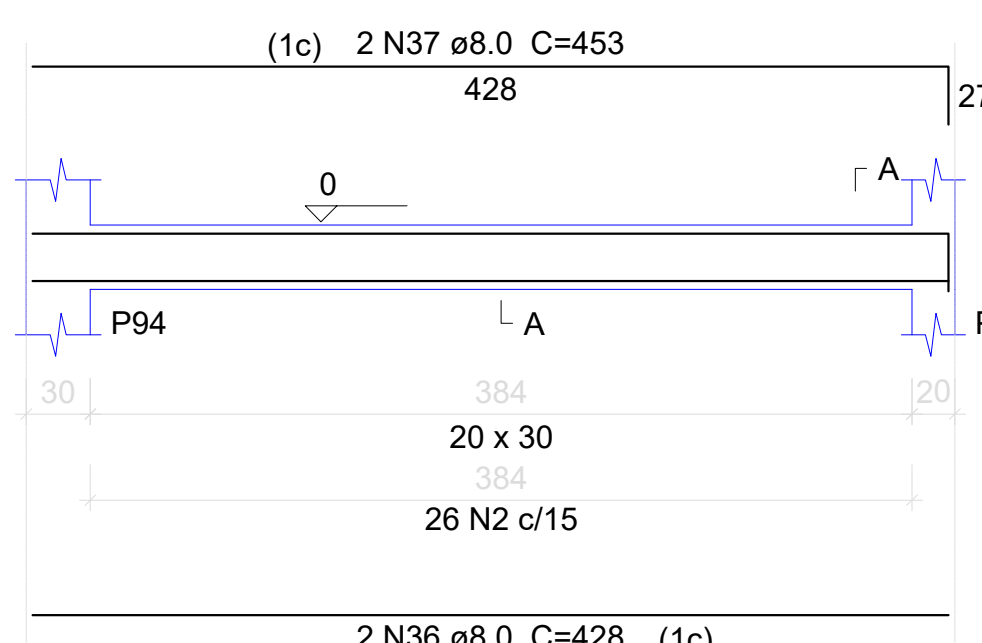
V63

ESC 1:50



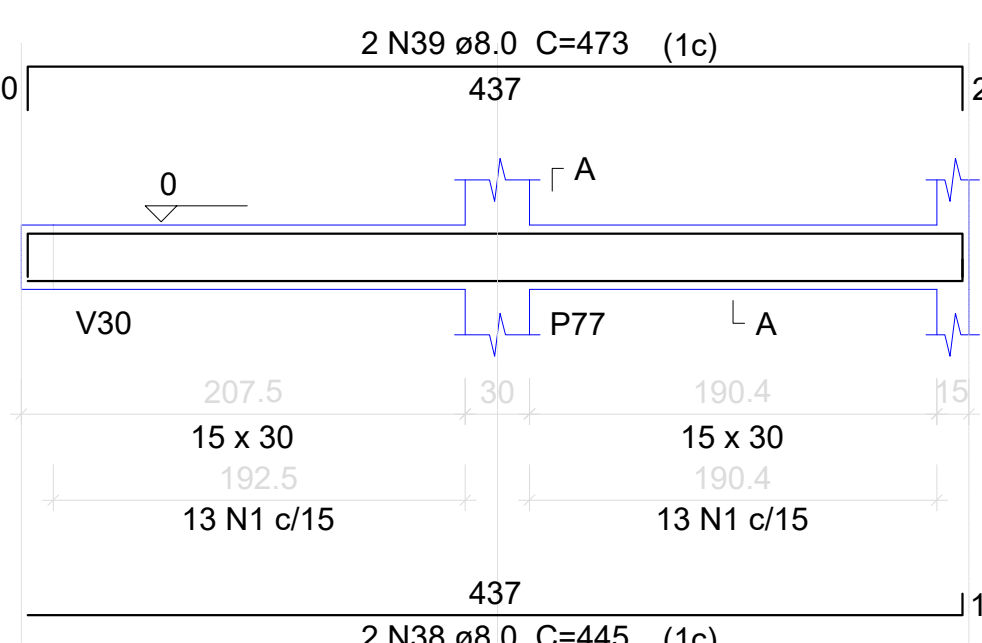
V64

ESC 1:50



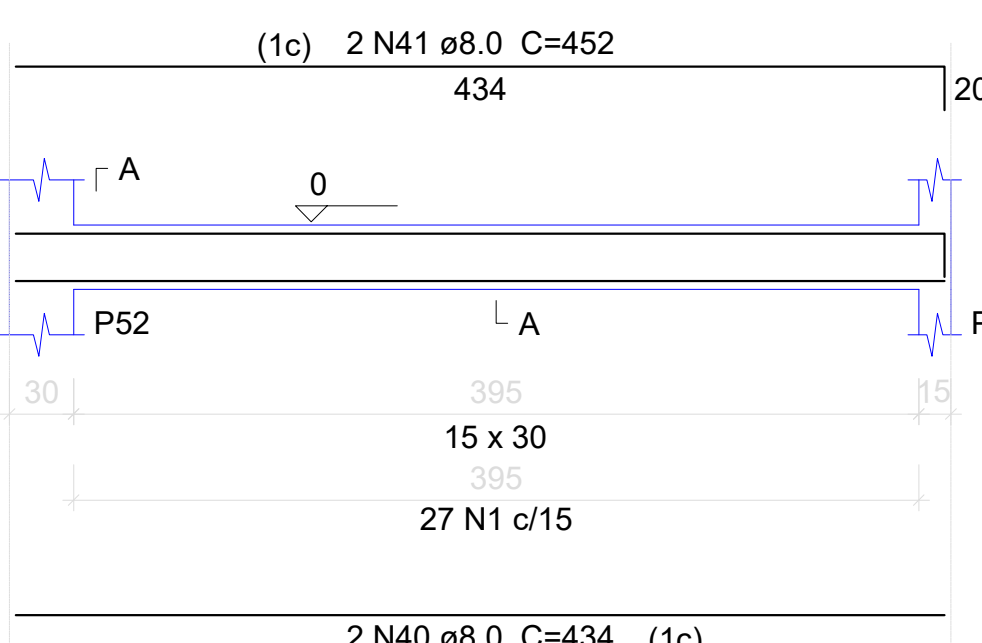
V65

ESC 1:50



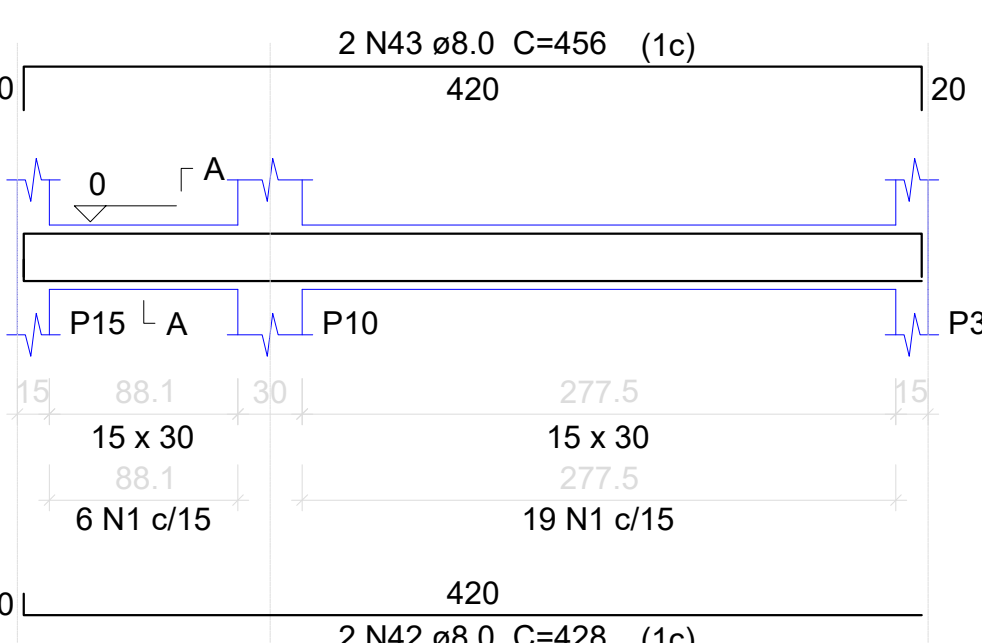
V66

ESC 1:50



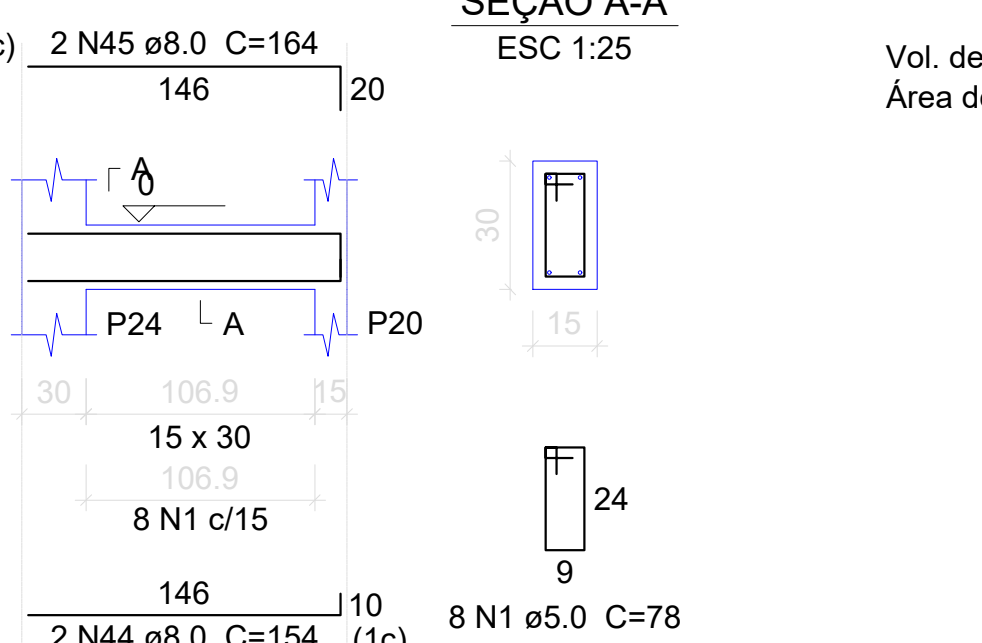
V67

ESC 1:50



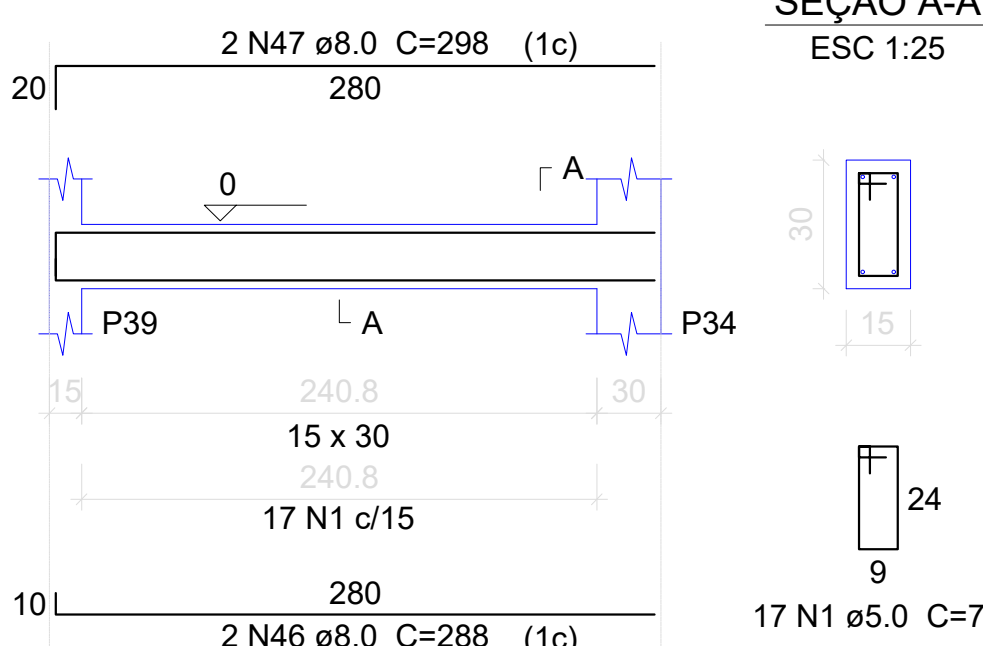
V68

ESC 1:50



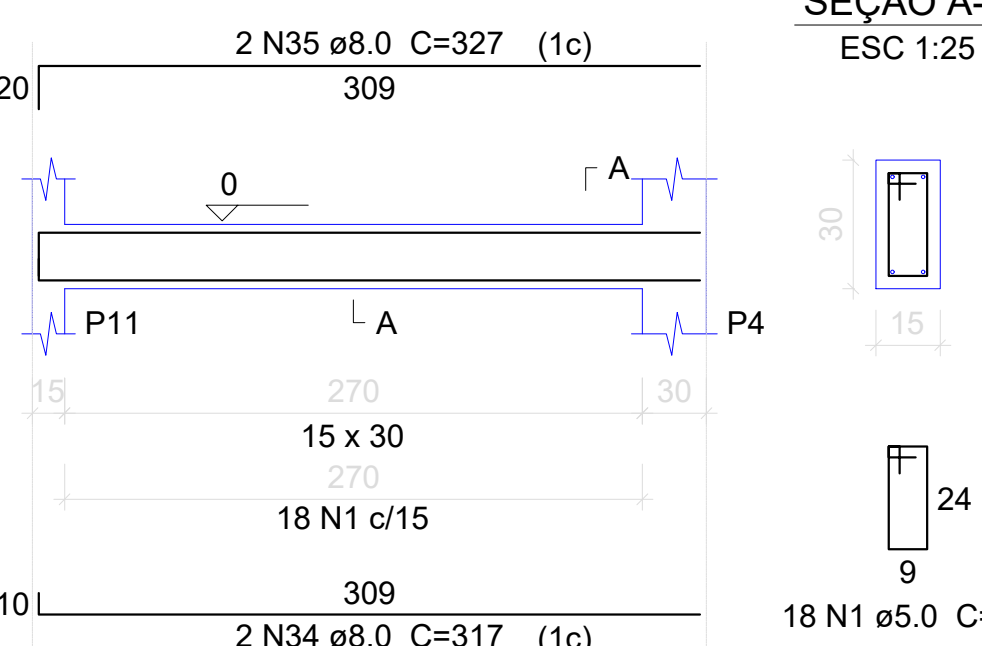
V69

ESC 1:50



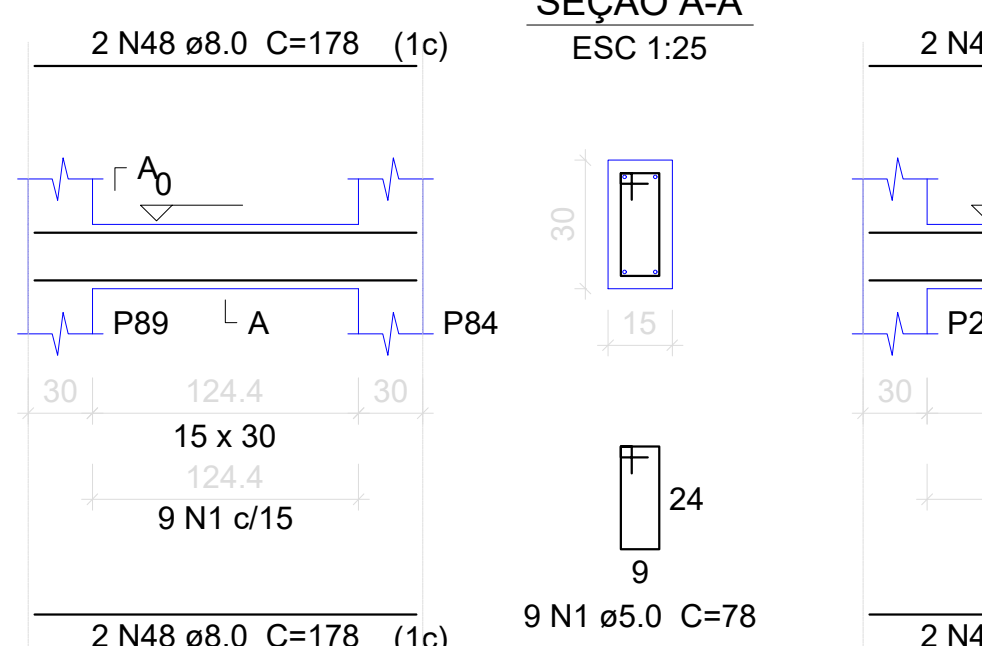
V70

ESC 1:50



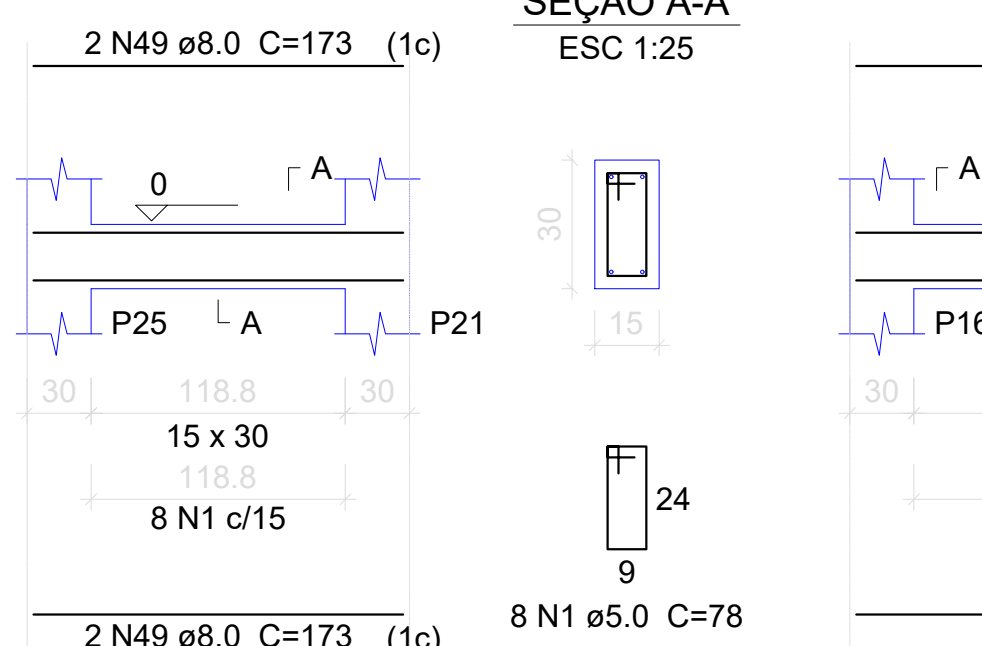
V71

ESC 1:50



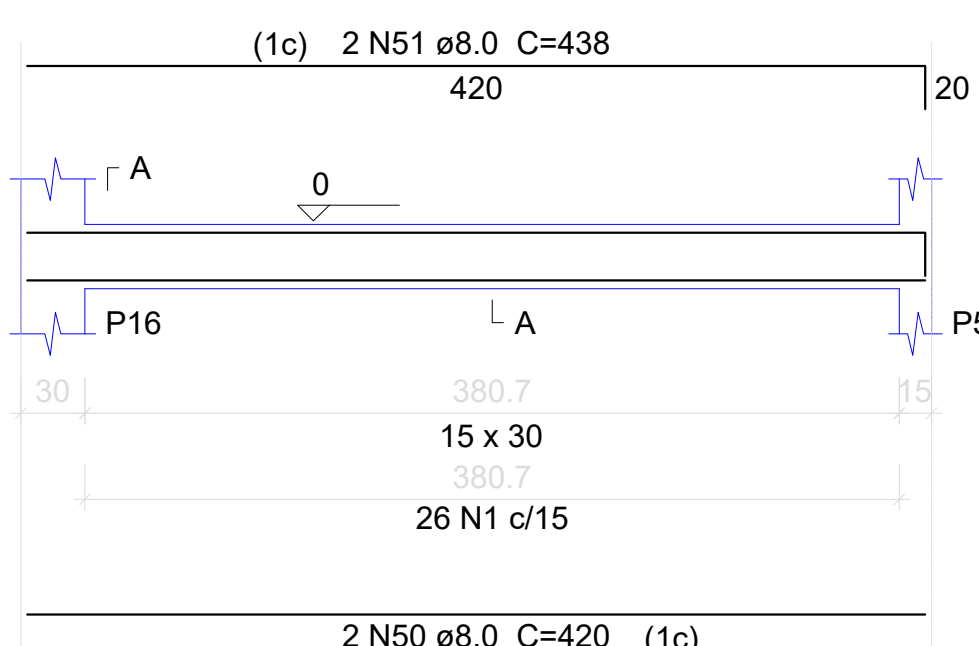
V72

ESC 1:50



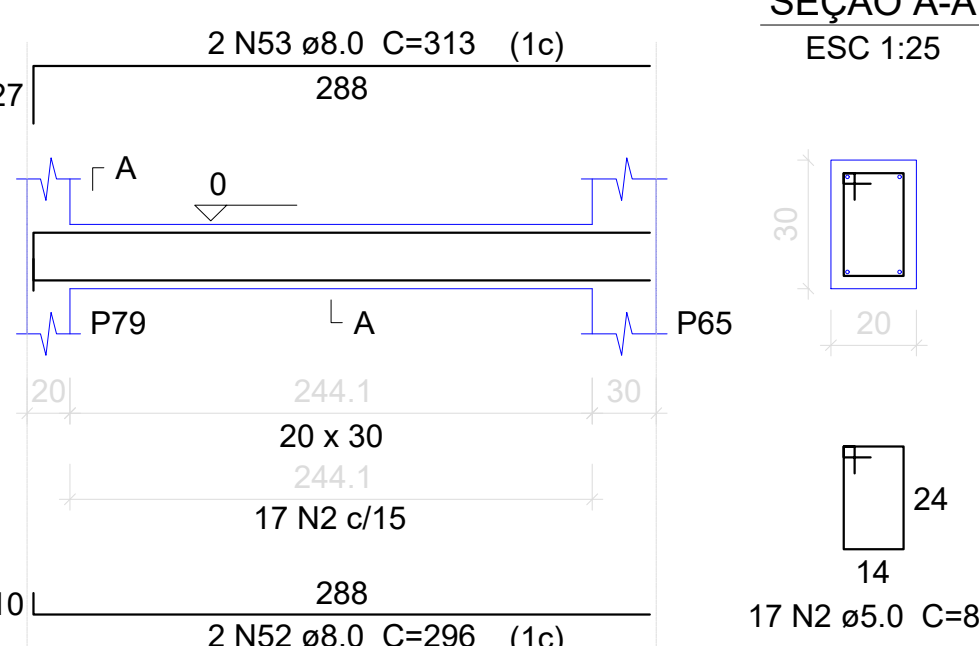
V73

ESC 1:50



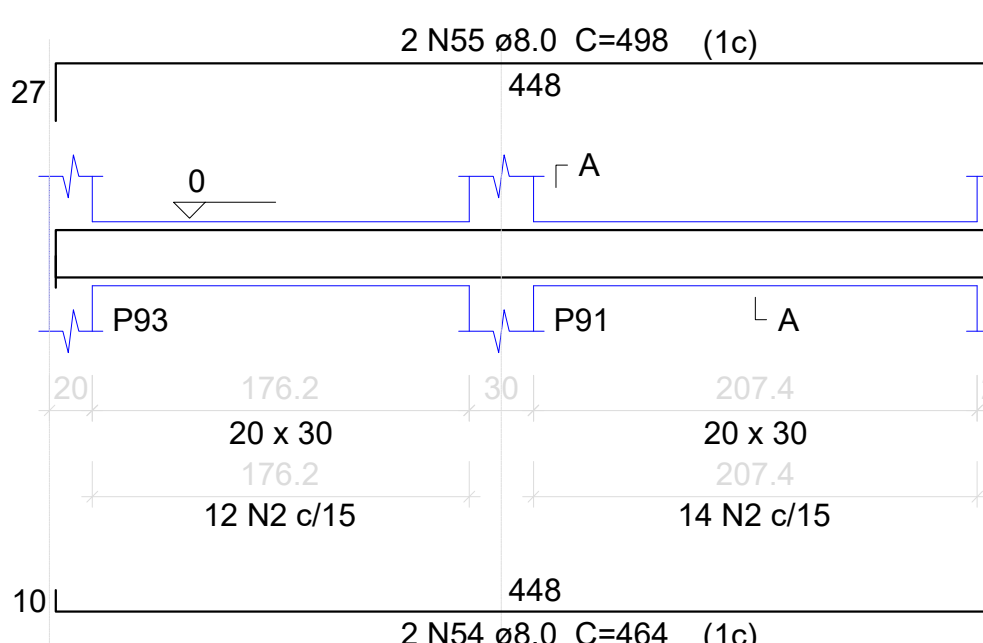
V74

ESC 1:50



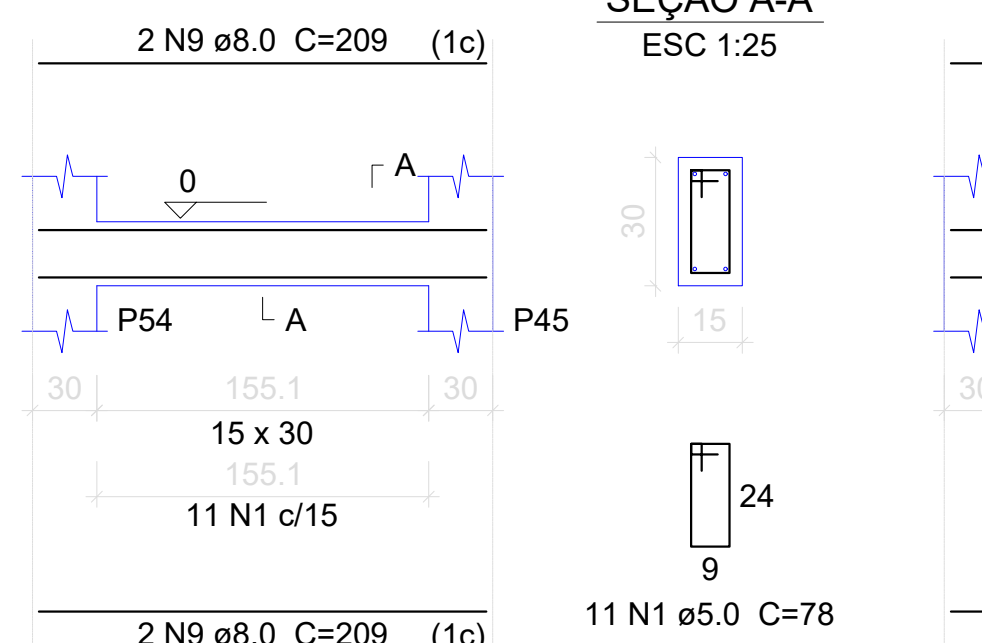
V75

ESC 1:50



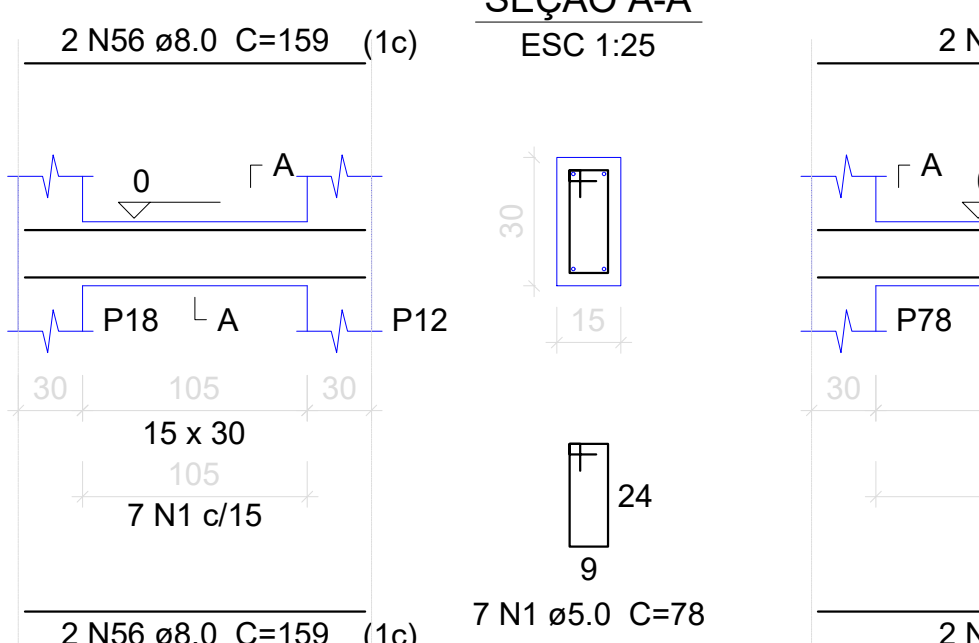
V76

ESC 1:50



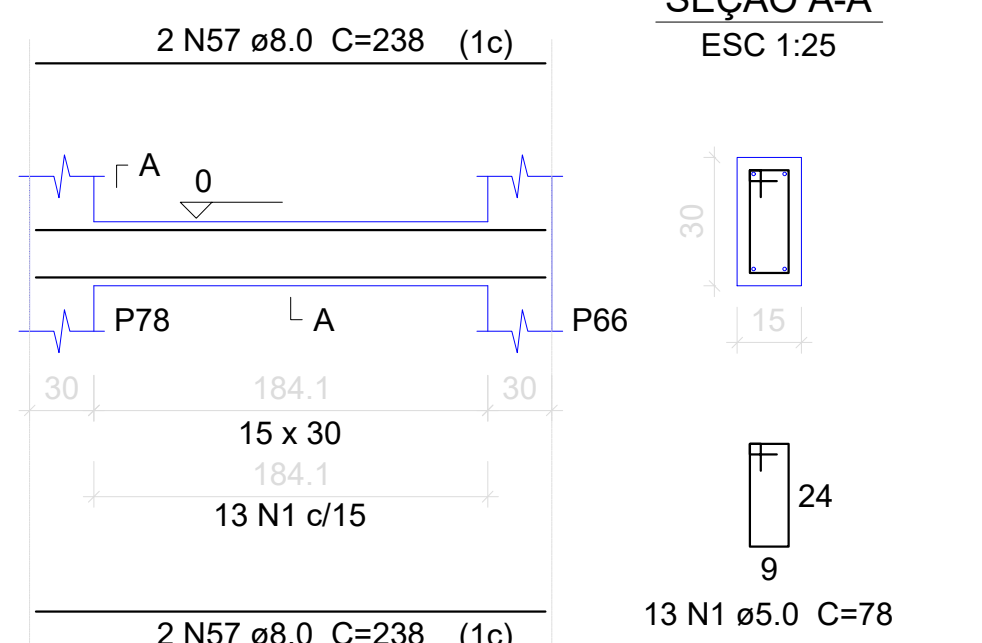
V77

ESC 1:50



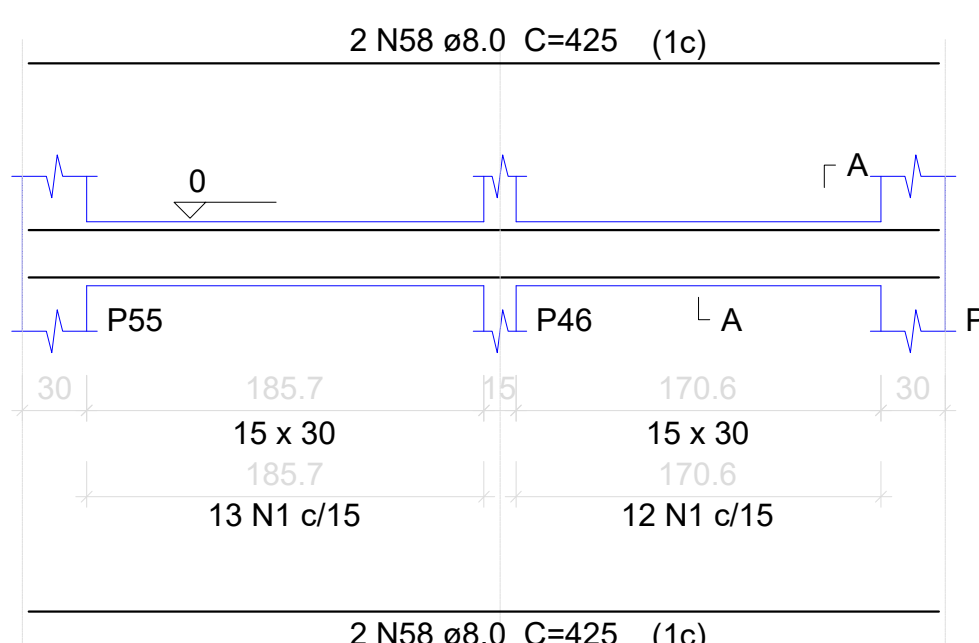
V78

ESC 1:50



V79

ESC 1:50



Relação do aço

V43	V44	V45
V46	V47	V48
V49	V50	V51
V52	V53	V54
V55	V56	V57
V58	V59	V60
V61	V62	V63
V64	V65	V66
V67	V68	V69
V70	V71	V72
V73	V74	V75
V76	V77	V78
V79		

AO	N	DIAM	Q	UNIT (cm)	C.TOTAL (cm)
CA60	1	5.0	734	78	57252
	2	5.0	69	88	6072
CA50	3	8.0	6	447	2682
	4	8.0	2	465	930
	5	8.0	4	306	1224
	6	8.0	2	342	684
	7	8.0	2	352	704
	8	8.0	4	484	1936
	9	8.0	8	209	1672
	10	8.0	4	210	840
	11	8.0	4	439	1756
	12	8.0	4	225	900
	13	8.0	4	443	1772
	14	8.0	4	250	1000
	15	8.0	2	250	500
	16	8.0	2	280	520
	17	8.0	4	285	1140
	18	8.0	2	878	1756
	19	8.0	2	445	890
	20	8.0	2	1143	2286
	21	8.0	2	179	358
	22	8.0	2	127	254
	23	8.0	2	137	274
	24	8.0	2	310	620
	25	8.0	2	328	656
	26	8.0	2	327	654
	27	8.0	2	345	690
	28	8.0	2	182	364
	29	8.0	2	196	392
	30	8.0	2	1019	2038
	31	8.0	2	1029	2058
	32	8.0	2	838	1676
	33	8.0	2	856	1712
	34	8.0	4	317	1268
	35	8.0	4	327	1308
	36	8.0	2	428	856
	37	8.0	2	453	906
	38	8.0	2	445	890
	39	8.0	2	473	946
	40	8.0	2	434	868
	41	8.0	2	452	904
	42	8.0	2	428	856
	43	8.0	2	456	912
	44	8.0	2	154	308
	45	8.0	2	164	328
	46	8.0	2	288	576
	47	8.0	2	298	596
	48	8.0	4	178	712
	49	8.0	4	173	692
	50	8.0	2	420	840
	51	8.0	2	438	876
	52	8.0	2	296	592
	53	8.0	2	313	626
	54	8.0	2	464	928
	55	8.0	2	498	996
	56	8.0	4	159	636
	57	8.0	4	238	952
	58	8.0	4	425	1700

Resumo do aço

AO	DIAM	C.TOTAL (m)	PESO (kg)
CA50	8.0	560.1	221
CA60	5.0	633.3	97.6
PESO TOTAL			
CA50	221		
CA60	97.6		

Vol. de concreto total (C-25) = 6.43 m³  
Área de forma total = 104.72 m²ESTADO DE MATO GROSSO  
PREFEITURA MUNICIPAL DE BARRA DO GARÇAS  
CNPJ 02.428.230/0001-06  
Rua Carajás, 532 centro - Barra do Garças MT - CEP 78.600-000L.F. Pereira Engenharia  
CNPJ 24.686.425/0001-64  
Rua Concordia, nº 767 S. - Bairro: Jardim Primavera,  
CEP 78755-000 - Barra do Garças - MT - (64) 98163-9030

Obra:		REFORMA E AMPLIAÇÃO DO PRONTO SOCORRO E HOSPITAL MUNICIPAL MILTON PESSOA MORBECK	
Conteúdo:		PROJETO ESTRUTURAL - PAV. FUNDAÇÃO VIGAS 2-3	
Local:		HOSPITAL MUNICIPAL DE BARRA DO GARÇAS, JARDIM AMAZÔNIA 1 BARRA DO GARÇAS - MT	
Propriedade:		Prefeitura Municipal Barra do Garças	
Autor do projeto:		Responsável Técnico:	
ENGENHEIRO CIVIL Luiz Fernando Pereira CREA: 170.633.6586 RN		ENGENHEIRO CIVIL	
Folha: A0	Dimensões:	Escala:	INDICADAS
Arquivo: CAD	Data: Jan/2023	Folha:	07/08